



genive green Co.,Ltd.

บริษัท เจนิเว่ กรีน จำกัด

We are a premier System Integration and Digital Transformation partner, dedication to delivering cutting-edge technological solutions That empower businesses to thrive in the digital era Specializing in comprehensive technology eco systems , we bridge the gap between innovative technologies and practical business needs.





Technology Implementer

A forward – thinking technology company that transforms complex technological challenges into seamless, intelligent Solutions with professional implementation team

Solution Architects

Expert in designing and implementing integrated Technology frameworks across multiple requirements

Digital Transformation Enablers

We help organizations reimagine their operational capabilities through smart, adaptive technologies

Our Identity



Smart Board

No Code software development tool

Cyber Security

Server & Network

AI Data Center

Office and Security Solution

Content & Media

Edtech Solutions

Renewable Energy Solution



Products and Services



Smart Board

Hisense

Interactive LED monitor

For professional display

Shift the standard of display that
provides the best professional
experience, meeting the needs of
organizations in a complete way



GoBoard Live
Advanced Interactive Display
with Integrated 4K Camera



65" 75" 86"

GoBoard
Advanced Interactive Display



65" 75" 86"

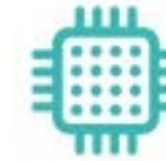
Hisense

Hisense Interactive Display solutions deliver unrivalled performance and market leading value. Combining the power of a digital display, tablet, electronic whiteboard and video conference device, Hisense delivers the ultimate all-in-one display solution. Superior processors and the latest touch technology provide best-in-class user experiences while seamless wireless integration makes collaboration both simple and engaging.



4K Ultra HD

The 4K Ultra HD picture quality* ensures perfect colour and rich details in all possible broadcasting surroundings, ranging from shops, to restaurants and office buildings



Powerful Architecture

Expect unstoppable performance by an octa-core processor and 3+32GB large memory.



Screen transmission

The WR series interactive digital boards can wirelessly connect with two or more auxiliary screen devices. Near-Field Communication (NFC) touch transmission and A&C screen transmission simplify this process.



Intuitive controls

With your fingers you will, among other things, be able to switch between tasks, annotate content from any source, make handwritten notes, zoom in / out and undo changes.



Collaborative interaction

The touchscreen recognizes up to 20 touches at once which is ideal for simultaneous use by meeting participants.



Tempered Glass

Hisense's WR series have heat treated tempered glass preventing any damage to the touch panels.



Native Apps



GOOGLE CHROME



MAPS



MEET



CALENDAR



GMAIL



YOUTUBE



DRIVE



PLAY STORE



GOOGLE CLASSROOM



PHOTOS



GOOGLE DOCS



GOOGLE SHEETS



LED IN DOOR



LED OUT DOOR





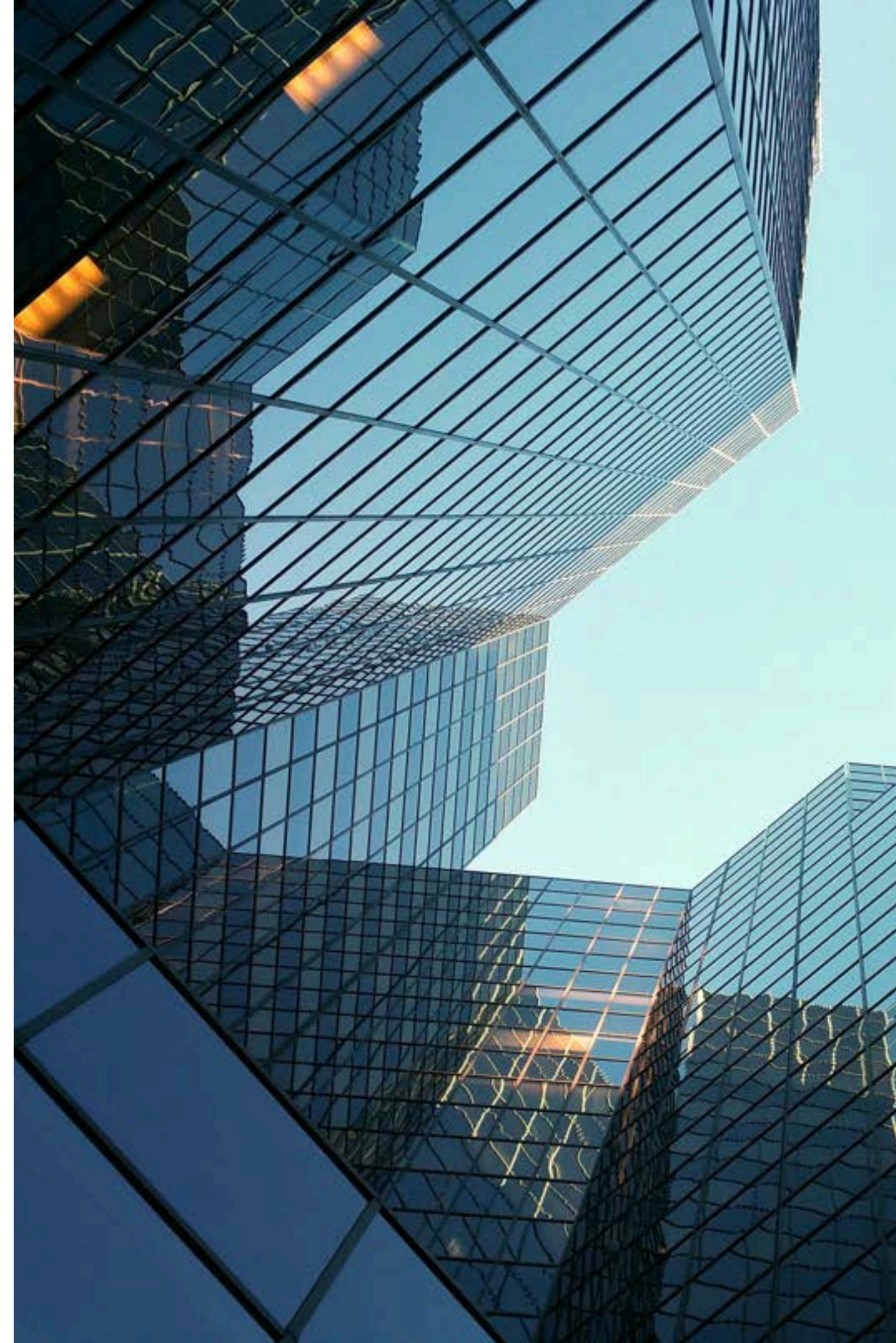
Office and Security Solution

Product and Service

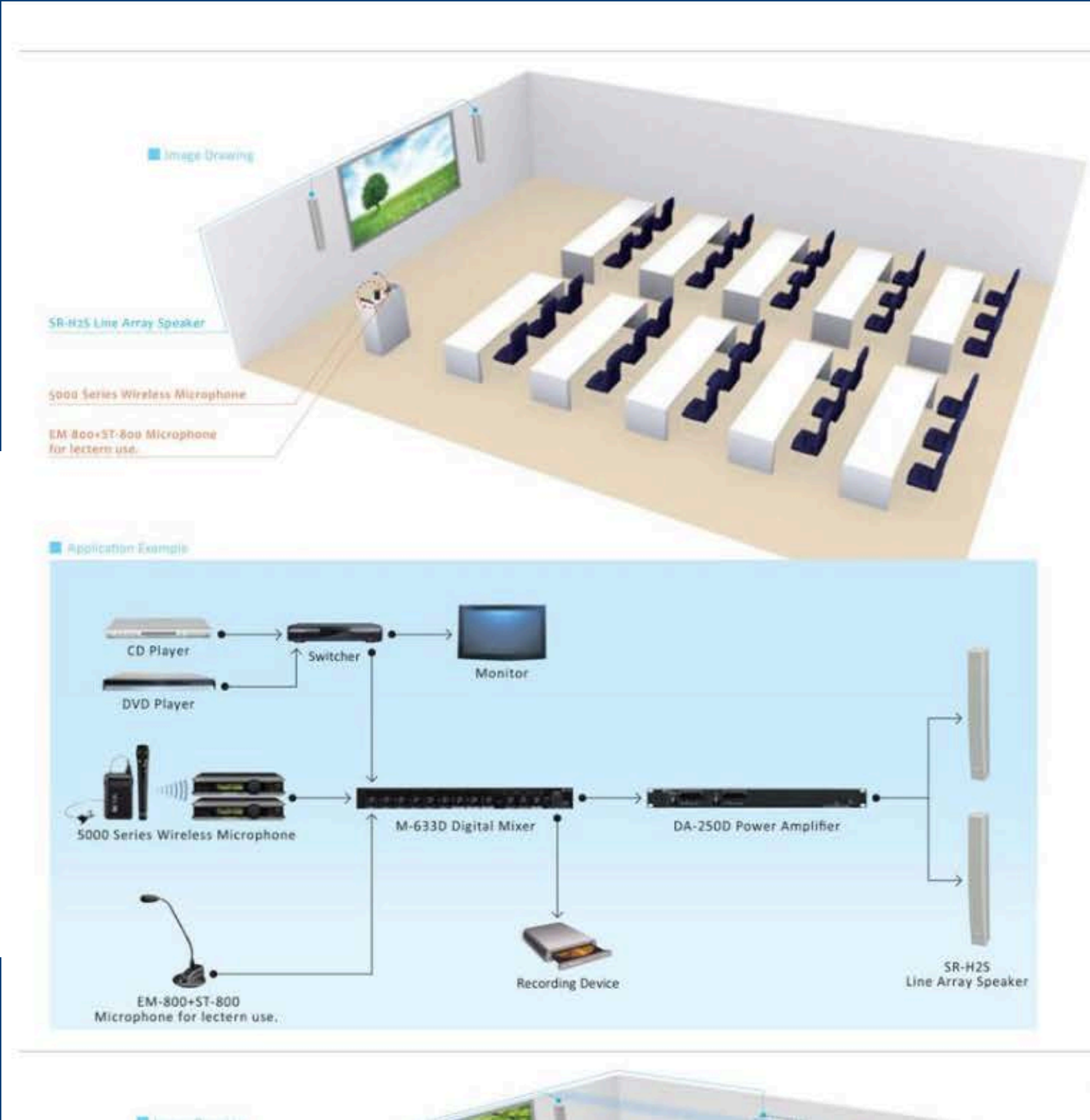
Integrated Solutions for Your Business Needs

- Visual Systems: Cutting-edge technology to enhance your display and presentation capabilities.
- Audio Systems: High-quality sound systems to ensure clear communication and immersive experiences.
- Video Conferencing Systems: Seamless remote communication for effortless collaboration across distances.
- Diagram Design: Innovative and easy-to-understand diagrams to represent complex ideas clearly.
- Interior Design: Creative and functional designs to transform your workspace into an inspiring environment.
- Smart Meeting Room Management Software: Custom software solutions to optimize and manage your meeting room activities efficiently.
- Solar Rooftop Installation for Medium and Large Factories: Sustainable energy solutions to power your business with clean, renewable energy.

Partner with us for efficient, innovative, and future-ready solutions!



VISUAL & AUDIO SYSTEM



MIXERS / AUDIO PROCESSORS



DIGITAL MATRIX MIXER
AMPLIFIERS



VDO CONFERENCE SYSTEM



Innovative Spirit Leader In The Market

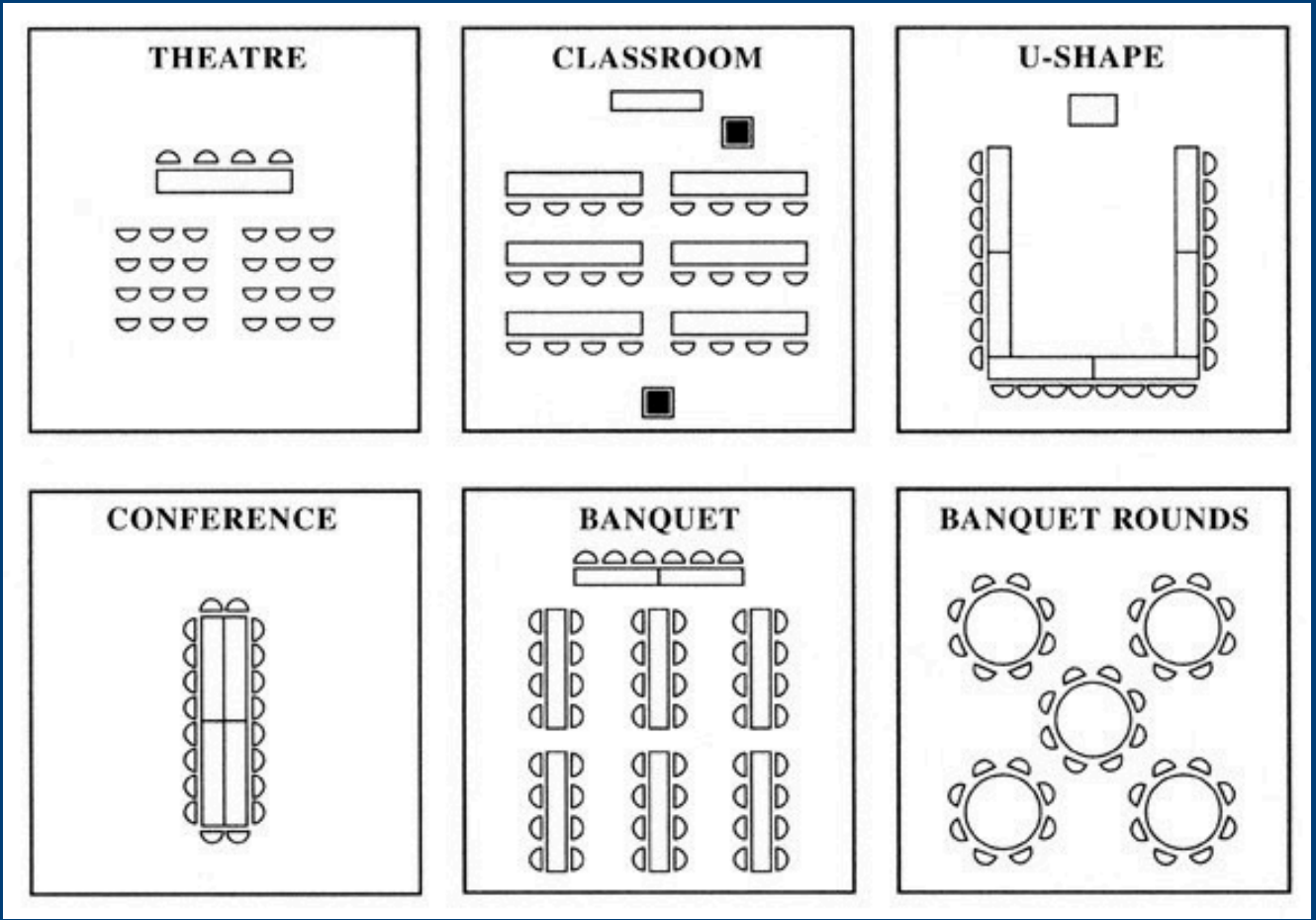
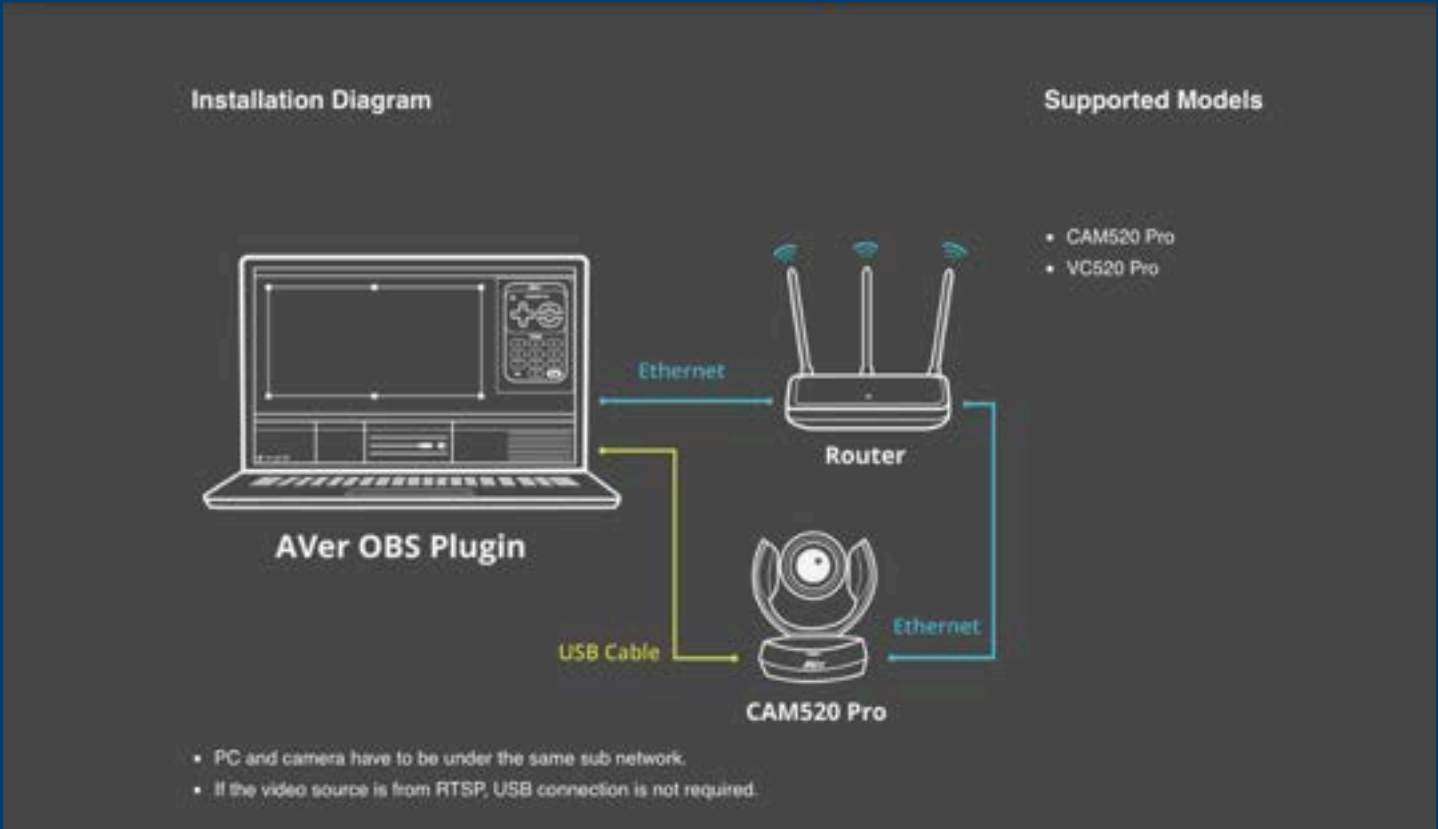
AVer professional video conferencing solutions have won many international awards. It is committed to innovative video conferencing devices, which can help increase enterprise productivity and business competitive advantage.

The image displays a collection of award logos and certificates. The logos include 'BEST MARKET 2021', 'BEST SHOW AT ISTE 2019', 'reddot award 2019 winner', 'Unified Excellence 2019', 'BIG AWARDS FOR BUSINESS 2020', 'SILVER BEST 2019', 'TAIWAN EXCELLENCE', 'Communications SOLUTIONS 2020', and 'Unified'. The certificates are from various international organizations and trade shows.



USB CONFERENCING

MEETING ROOM





INTERIOR DESIGN



SMART PODIUM





Our Services: CCTV Systems

1

Surveillance & Security

We install and configure robust CCTV systems to provide comprehensive security monitoring for your premises.

2

Real-time Monitoring

Our systems enable real-time monitoring and recording of video footage for security and investigative purposes.

3

Remote Access & Control

We offer remote access and control features for managing and monitoring your CCTV system from anywhere.





Software Development service

- CMS Website
- Web Application
- Mobile Native iOS / Android
- BI
- Private GPT

Software Development

Custom Software Development

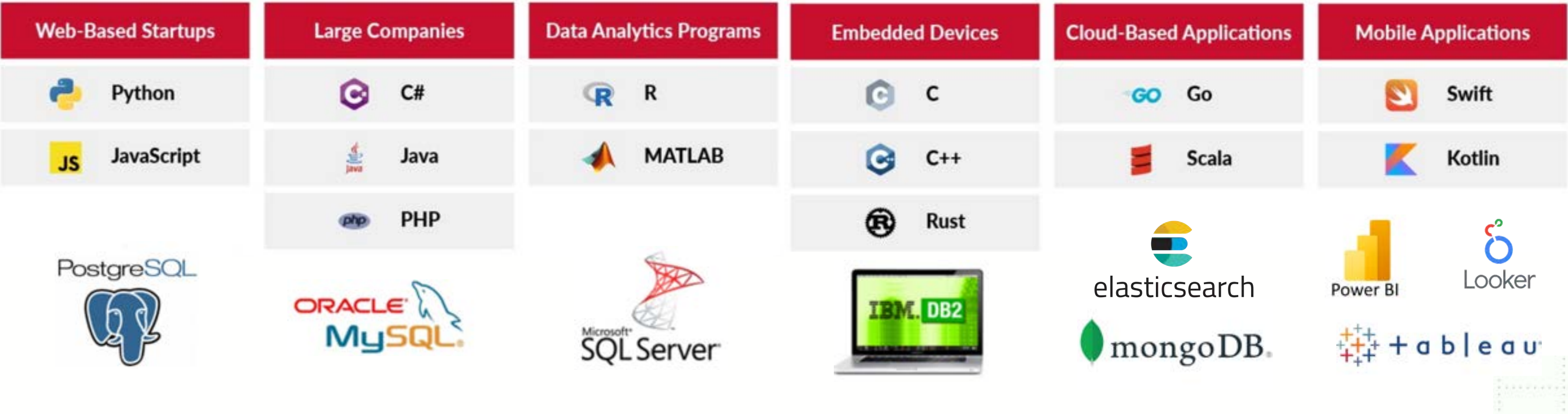
We create bespoke software solutions tailored to meet your specific business requirements. Our team utilizes agile methodologies to ensure transparency and efficient delivery.

Mobile App Development

We develop high-quality mobile applications for both iOS and Android platforms. Our apps are designed to be user-friendly and deliver an engaging user experience.

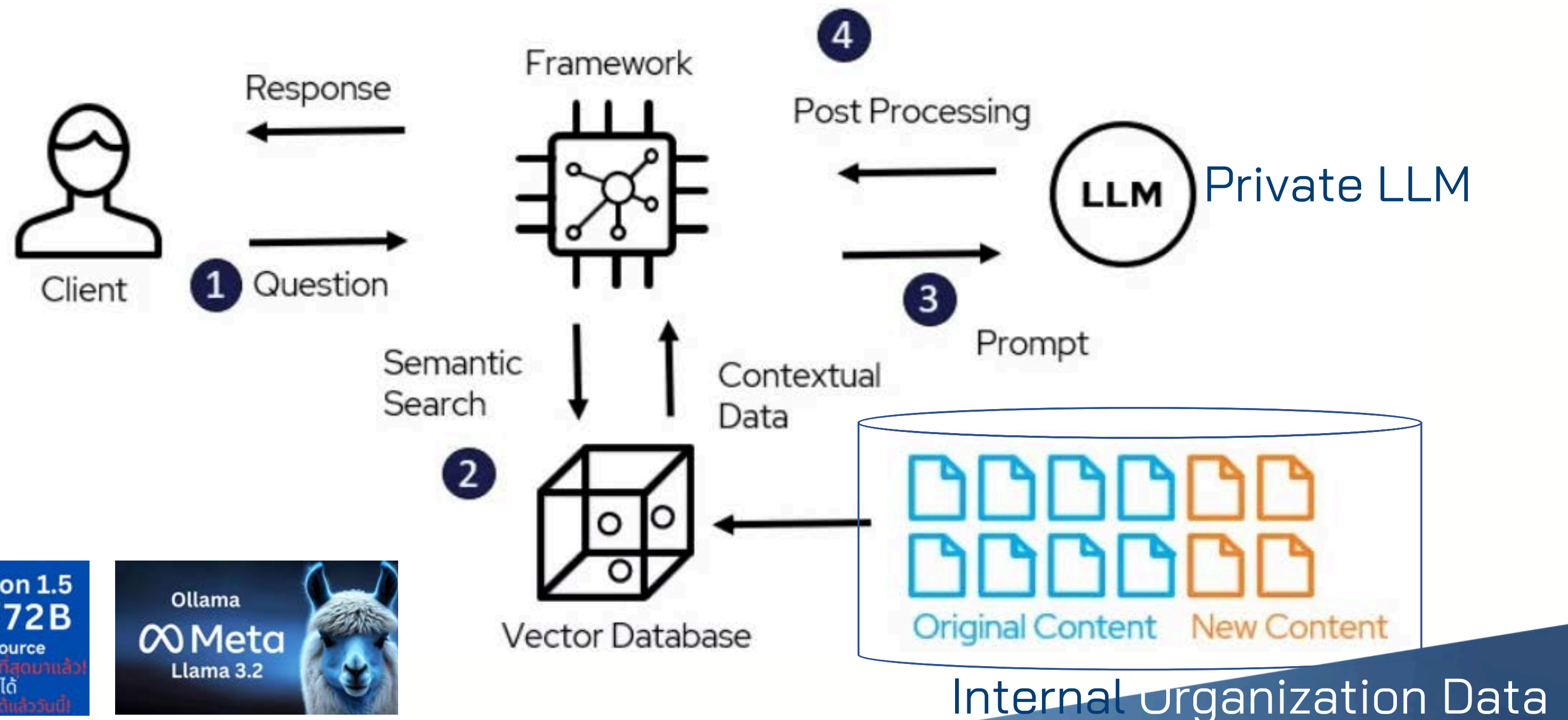
Web Application Development

We develop modern and scalable web applications that are secure, reliable, and optimized for performance. We utilize various frameworks and technologies to deliver the best results.



Private GPT - LLM & RAG Architecture Model

Retrieval augmented generation (RAG) has emerged as a powerful technique for improving the capabilities of language models. By retrieving and conditioning on external knowledge, RAG allows models to generate more accurate, relevant, and comprehensive text.



The background of the slide features a digital-themed illustration. On the left, there is a dense cluster of various white icons on a blue background, including a camera, a classical building, a bus, a play button, a Wi-Fi symbol, a pie chart, a speech bubble, a heart, a clock, a battery, a gear, a dollar sign, a wrench, a lightbulb, a shield, a recycling symbol, a house, a snowflake, a power button, a shopping cart, a car, a truck, and a musical note. These icons are interconnected by a network of thin, glowing white lines. To the right of this icon cluster, several rows of server racks are visible, each with multiple glowing screens displaying colorful data and charts. The overall color palette is dominated by shades of blue and white, with a dark blue gradient at the bottom of the slide.

Cyber Security

- RED TEAM
- BLUE TEAM
- CYBERSECURITY STANDARDS AND COMPLIANCE
- PEN Test
- TRAINING
- Threat Intel
- Compromise Assessment Service
- CSOC (Stellar, ArcSight - UEBA)
- XDR
- Incident/Response
- Infra Hardening
- Cyber Drill
- IT Security Audit Service (ISO) "

We are ready to provide consulting services to help organizations achieve ISO certification for international security standards.

Additionally, we offer guidance on Cyber Insurance, which helps mitigate financial burdens arising from cyber threats or security breaches, ensuring better protection against potential cyber risks.





CYBER SECURITY PROCESS



**CYBER SECURITY
COMPLIANCE**



**ISO / IEC 27701
PDPA IMPLEMENTATION**



**CYBER SECURITY
FRAMEWORK**



**ISO / IEC
27001**



Cybersecurity Framework



IDENTIFY

- Penetration Testing
- Vulnerability Assessment
- IT Technical Auditing
- Cyber Drill & Simulation



PROTECT

- Cybersecurity Training
- Cybersecurity Hardening
- Cybersecurity Consultant
- Compliance Implementation



DETECT

- SOC Implementation
- SOC Consultant
- Threat Intelligent Service
- Compromise Assessment



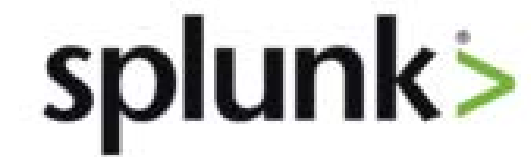
RESPONSE

- Incident Response
- Digital Forensics
- Malware Analysis



Cybersecurity Operation Center





Our Experience in SIEM Products

OUR TRAINING COURSES

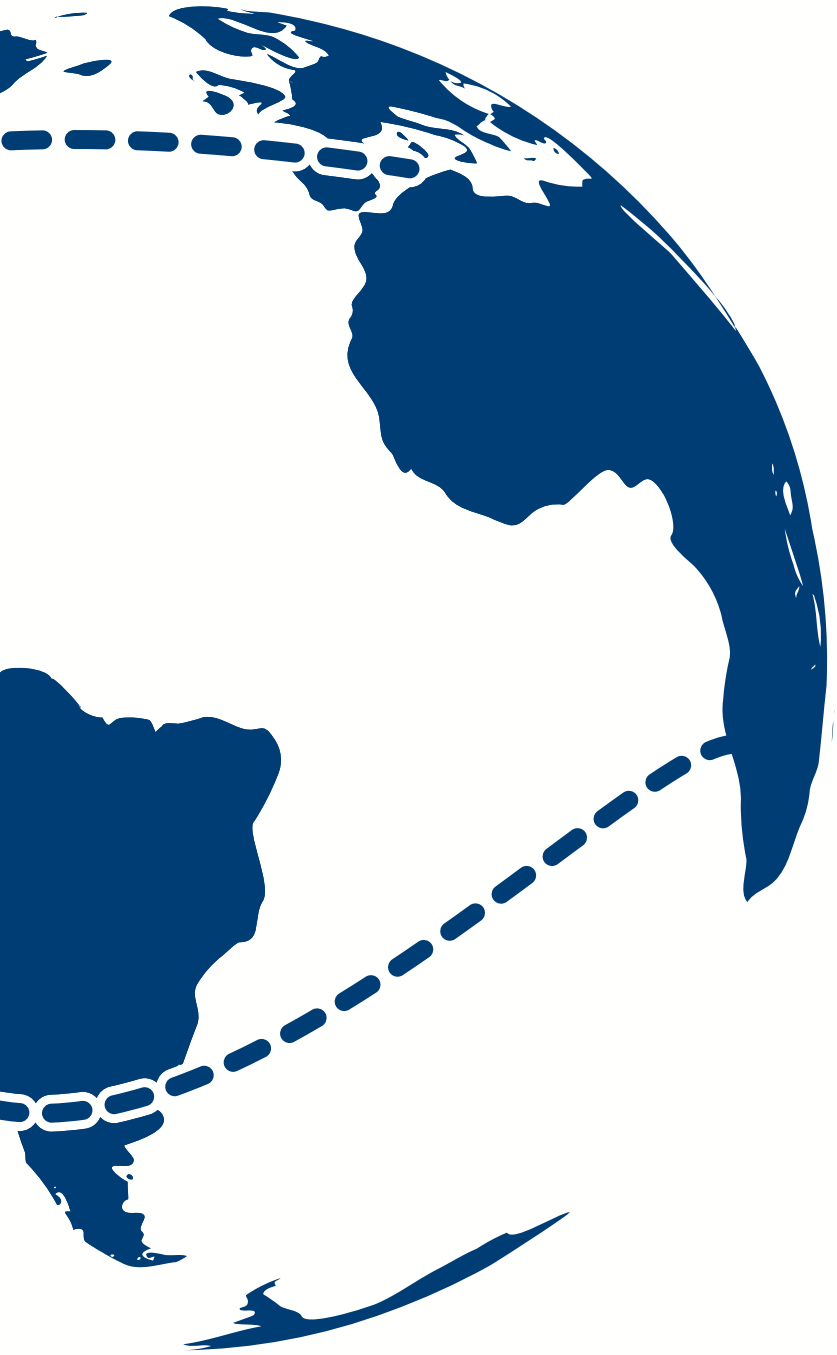


- ★ All-in-One Cybersecurity
- ★ All-in-One Virtualization and Cloud Security v1
- ★ CISSP
- ★ Cybersecurity Awareness Training
- ★ Cybersecurity for IT Auditor
- ★ Cybersecurity Fundamental
- ★ Cybersecurity Workshop
- ★ Digital Forensics
- ★ Evidence Acquisition
- ★ How to be a Cyber Threat Hunter v1
- ★ How to be an Incident Responder v1
- ★ Infrastructure Security
- ★ Malware Analysis
- ★ Network Forensics
- ★ Network Penetration Testing
- ★ Offensive for CTF
- ★ Offensive Security (Red Team) v1
- ★ Overview Web Application Security
- ★ Penetration Testing With Kali
- ★ SOC Analyst Outline
- ★ SOC Operation and Analysis C
- ★ SOC Operation and Analysis
- ★ SOC Operation Outline
- ★ Web Application
- ★ Web Application Hacking
- ★ Web Application Hacking & Secure Coding



การลงมือปฏิบัติผ่าน LAB ด้วย
Platform 

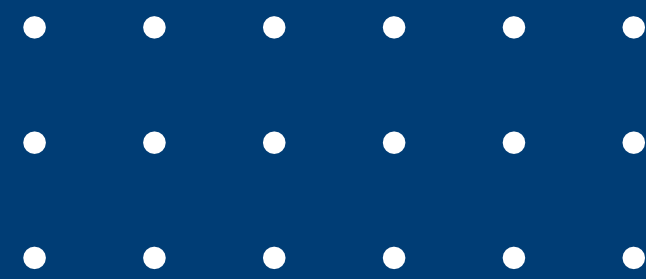
Server & Network



Server and Network Computer Sales & Installation Services

- Comprehensive Server & Network Installation: Tailored solutions for businesses of all sizes, from small enterprises to large organizations.
- Efficient & Stable Connectivity: Enhance speed and reliability to ensure seamless system performance.
- Virtual Server Deployment: Design and install Virtual Machines (VMs) using VMware, OpenStack, and Kubernetes.
- Customized Business Solutions: Analyze specific requirements and implement the most suitable solutions to optimize operations.
- Top-Notch Data Security: Utilize the latest technologies and standards to protect critical business information.
- Reliable After-Sales Support: 24/7 assistance to troubleshoot issues and provide expert guidance, ensuring uninterrupted business operations.

Renewable Energy Solution



Become a leading supplier of innovative and sustainable solutions.

Innovation: We are committed to developing and bringing innovative products and services to market that meet customer needs and have a positive impact on the world.

Sustainability: We are committed to operating our business sustainably. Reduce environmental impact and promote a more sustainable future.

Customer Focus: We are committed to providing the best products and services to our customers. Including building strong relationships.

Responsibility: We are committed to acting responsibly in everything we do, towards our customers.



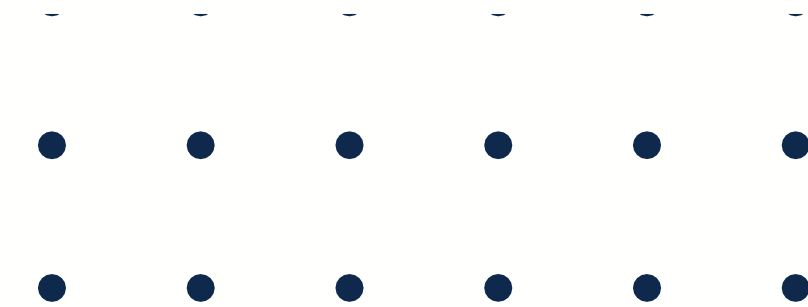


PRODUCTS

- Solar rooftop
- Solar farm
- Solar floating

SERVICES

- Site Survey
- Optimized design
- Professional installation
- After sale service



PRODUCT AND SERVICES

OUR SOLAR PRODUCTS

Smart String Inverter



SUN2000-100KTL-M1



Smart

Smart I-V Curve Diagnosis supported



Efficient

Max. efficiency 98.8%



Safe

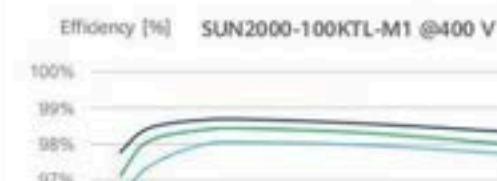
Fuse free design



Reliable

Type II surge arresters for DC & AC

Efficiency Curve



Circuit Diagram



OUR SOLAR PRODUCTS

1. DC CABLE

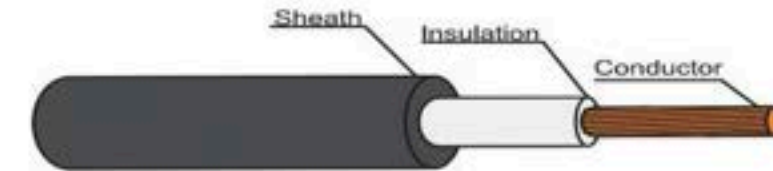
- 6 SQ.MM. (Single Core)

0.6/1 kV 90°C CROSS-LINKED POLYETHYLENE INSULATED PVC SHEATHED FLAME RETARDANT SUPER SOFT POWER CABLE

SUPER SOFT
YK
SERIES
CABLE

IEC 60502-1

TIS 2143-2546



CABLE STRUCTURE

Conductor : Non-compacted and compacted round annealed copper

Insulation : Cross-Linked polyethylene (XLPE)

Core identification : Single-core : Natural (Translucent)

Sheath : Black flame retardant polyvinyl chloride (PVC/ST2)

TECHNICAL DATA

Classification : Maximum conductor temperature 90°C
: Circuit voltage not exceeding 1,200 Volts

Rated voltage : 600 Volts between Line to Earth
: 1,000 Volts between Line to Line

Testing voltage : 3,500 Volts

Reference standard : IEC 60502-1, IEC 60228, IEC 60332-1
: IEC 60332-3-24 (Cat.C)

APPLICATION

For installation exposed, or in raceway, wet or dry location, or direct burial in ground.

Number of core	Nominal cross sectional area (mm ²)	Conductor type	Insulation thickness nominal (mm)	Sheath thickness nominal (mm)	Overall diameter approx. (mm)	Conductor resistance at 20°C maximum (Ω/km)	Insulation resistance at 20°C minimum (MΩ·km)	Continuous current rating in free air at 40°C maximum			Continuous current rating in ground at 30°C maximum (A)	Cable weight approx. (kg/km)	Standard Length (m/D)
								Spaced	Touching	Trefoil			
1	2.5	Non-Compacted	0.7	1.4	6.80	7.41	2,100	42	32	31	43	65	1000 2000
	4	Non-Compacted	0.7	1.4	7.30	4.61	1,700	54	42	41	55	80	1000 2000
	6	Non-Compacted	0.7	1.4	7.90	3.08	1,450	68	53	52	70	100	1000 2000
	10	Non-Compacted	0.7	1.4	8.80	1.83	1,250	90	73	71	92	150	1000 2000
	16	Compacted	0.7	1.4	9.50	1.15	1,000	124	95	93	119	200	1000 2000
	25	Compacted	0.9	1.4	11.0	0.727	1,050	166	128	123	152	300	1000 2000
	35	Compacted	0.9	1.4	12.2	0.524	900	206	160	154	184	390	1000 2000
	50	Compacted	1.0	1.4	13.5	0.387	850	250	197	188	217	500	1000 2000
	70	Compacted	1.1	1.4	15.5	0.268	800	321	254	244	266	700	1000 2000
	95	Compacted	1.1	1.5	17.5	0.193	650	391	311	298	318	950	1000 2000
	120	Compacted	1.2	1.5	19.0	0.153	650	455	364	349	362	1200	1000 2000
	150	Compacted	1.4	1.6	21	0.124	700	525	422	404	406	1500	1000 2000
	185	Compacted	1.6	1.6	23	0.0991	700	602	485	464	459	1800	1000 2000
	240	Compacted	1.7	1.7	26	0.0754	650	711	577	552	533	2400	1000 1500

Number of core	Nominal cross sectional area (mm ²)	A.C. Resistance			Inductance			Reactance			Impedance		
		R (Ω/km)			L (mH/km)			XL (Ω/km)			Z (Ω/km)		
		Space	Touching	Trefoil	Space	Touching	Trefoil	Space	Touching	Trefoil	Space	Touching	Trefoil
1	2.5	9.4485	9.4485	9.4485	0.6314	0.4928	0.4466	0.1984	0.1548	0.1403	9.4506	9.4498	9.4495
	4	5.8782	5.8782	5.8782	0.5988	0.4602	0.4140	0.1881	0.1446	0.1301	5.8812	5.8800	5.8797
	6	3.9273	3.9273	3.9273	0.5754	0.4368	0.3906	0.1808	0.1372	0.1227	3.9315	3.9297	3.9293
	10	2.3335	2.3335	2.3335	0.5459	0.4072	0.3610	0.1715	0.1279	0.1134	2.3398	2.3370	2.3362
	16	1.4664	1.4664	1.4664	0.5284	0.3898	0.3436	0.1660	0.1225	0.1079	1.4758	1.4715	1.4704
	25	0.9271	0.9271	0.9272	0.5159	0.3772	0.3310	0.1621	0.1185	0.1040	0.9412	0.9347	0.9330
	35	0.6683	0.6683	0.6684	0.5017	0.3630	0.3168	0.1576	0.1141	0.0995	0.6866	0.6780	0.6758
	50	0.4937	0.4937	0.4938	0.4913	0.3527	0.3065	0.1544	0.1108	0.0963	0.5172	0.5060	0.5031
	70	0.3420	0.3421	0.3422	0.4716	0.3330	0.2867	0.1482	0.1046	0.0901	0.3727	0.3578	0.3539
	95	0.2465	0.2467	0.2468	0.4651	0.3265	0.2803	0.1461	0.1026	0.0881	0.2865	0.2672	0.2621
	120	0.1656	0.1656	0.1661	0.4587	0.3201	0.2738	0.1441	0.1006	0.0860	0.2429	0.2302	0.2141



B



OUR SOLAR PRODUCTS

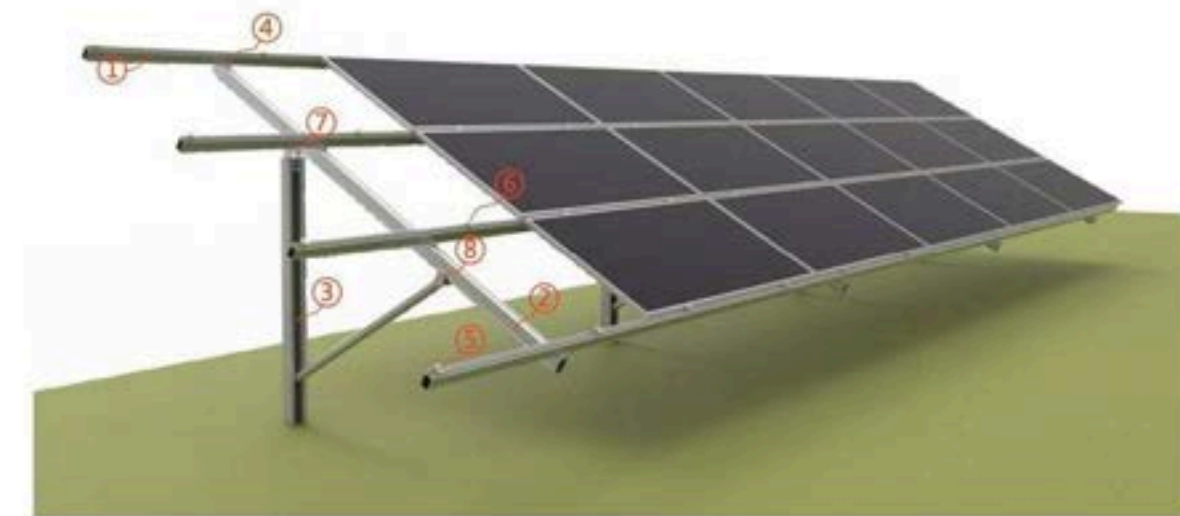
1. Mounting

- Goomax
- Grace Solar
- JM Solar

GRACE SOLAR

Single Column Piling Ground Mounting System

Horizontal row (Aluminum alloy)



Installation site	Ground
Inclination	0-45°
Construction height	<9m
Maximum wind speed	<60m/s
Maximum snow cover	<200cm
Material	High-strength aluminum alloy & A2-70
C-shaped steel material	Carbon steel SS400
Color	Silver or customized
Surface Treatment	Aluminum alloy anodizing Carbon steel hot-dip galvanizing
Foundation	Concrete Pre-buried Foundation C-shaped Pile Foundation
Reference Standards	ASCE7-10/05 EN1991 AS/NZS1170
Warranty	10 Years



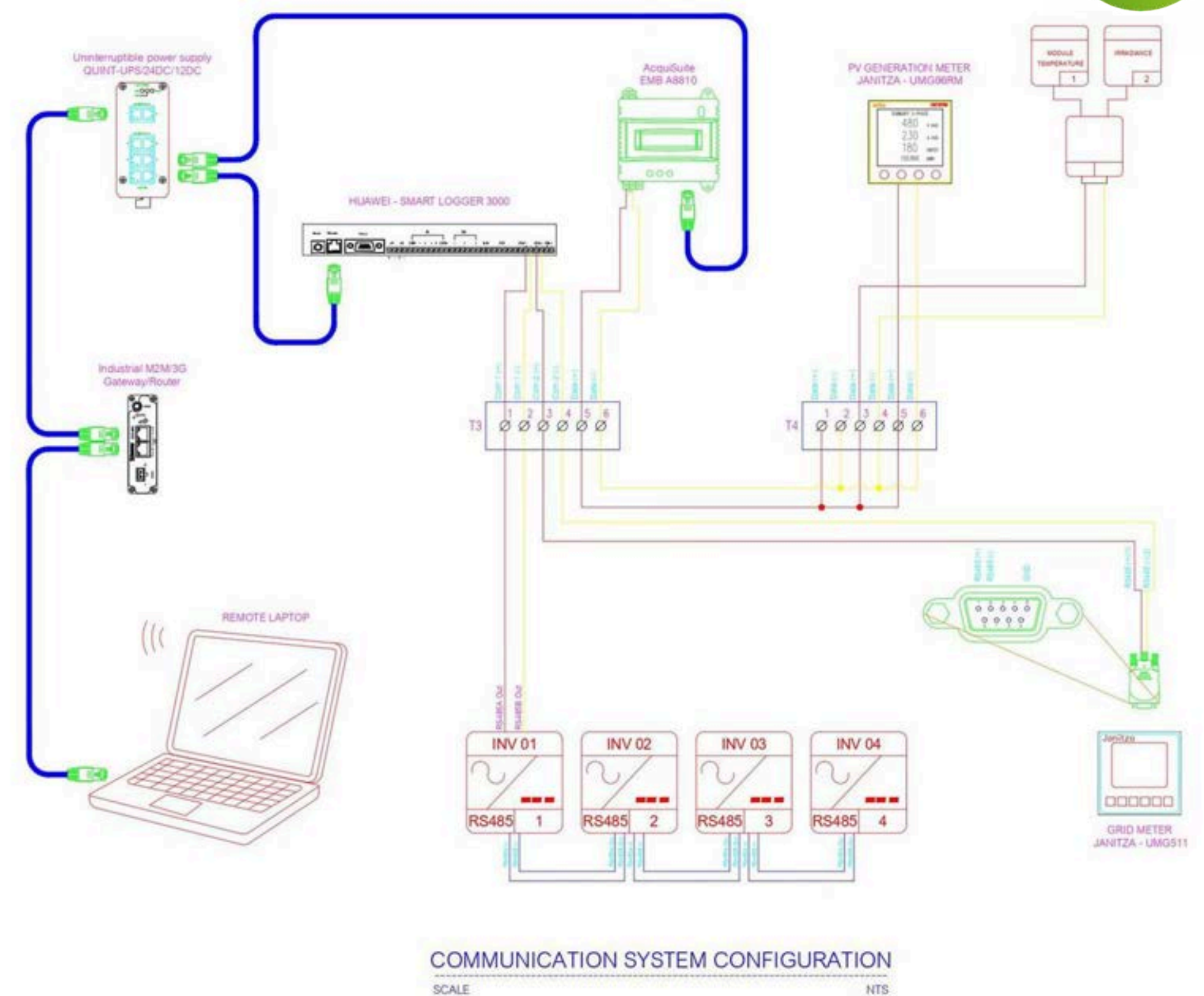
OUR SOLAR PRODUCTS

1. Weather Sensor
 - KIPP & Zonen
 - Hukseflux



OUR SOLAR PRODUCTS

6. Monitoring System





PROJECT REFERENCES



PROJECT REFERENCES: SOLAR FARM

SMART GREEN SOLUTION



SOLAR FARM CO-OP 5 MW

Songkhla



SOLAR FARM 6 MW.

TAK



WALAILAK UNIVERSITY 3 MW.

Nakhon Si Thammarat



HUANAKUM COOPERRATIVES 5 MW.

KALASIN



NONTHAI COOPERRATIVES 5 MW.

NAKONRASCHASIMA



SOLAR FARM CO-OP 1.2 MW.

Nakhon Si Thammarat



SOLAR FARM 1.5 MW.

Ratchaburi



PROJECT REFERENCES: SOLAR ROOFTOP

SMART GREEN SOLUTION



CENTRAL PLAZA 1 MW.

Surat Thani



BETAGRO FACTORY 857.72 KWP.

Phatthalung



BETAGRO FACTORY 857.72 KWP.

Phatthalung



SIAM GNE SOLAR ENERGY CO.,LTD 700 KWP

SCG GROUP (First solar project In THAILAND)



SIAM YAMATO STEEL CO.,LTD 500 KWP.

SCG GROUP



PROJECT REFERENCES: FLOATING 230.6 KWP

THAI BEVERAGE



PROJECT REFERENCES: FLOATING 5 MW.

SCG Thungsong



PROJECT REFERENCES: EV CHARGER STATION



PT Rama 2 GAS STATION



PROJECT ON PROGRESS : SOLAR FARM 30 MW_p

KANJANABURI



โครงการเดินสายสัญญาณ ชั้น4 รัฐสภาแห่งใหม่

บริษัท บีเอ็ม เน็ตเวิร์ค โซลูชั่น จำกัด



โครงการติดตั้งระบบไฟฟ้า

S.S.S Auto part Co.,LTD



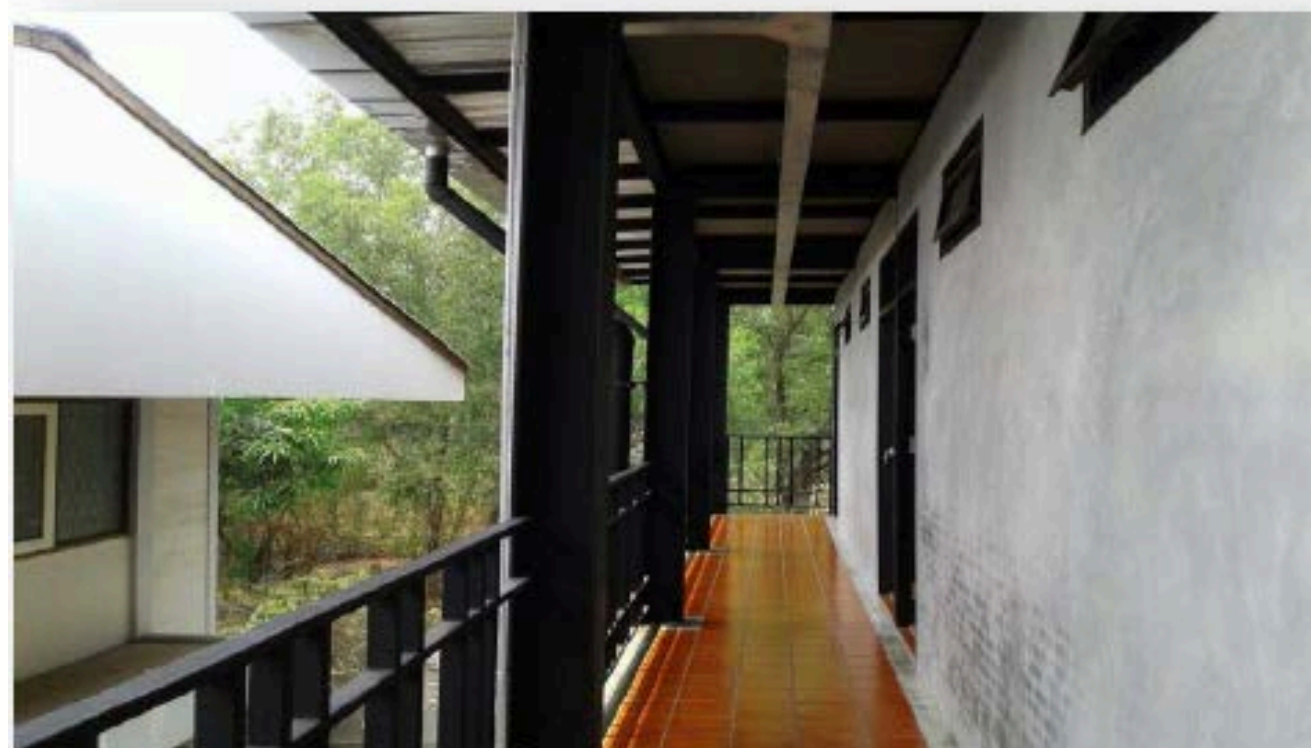
โครงการวางท่อระบายน้ำรอบเกาะเต่า

บริษัท เอส ซี จี 1995 จำกัด



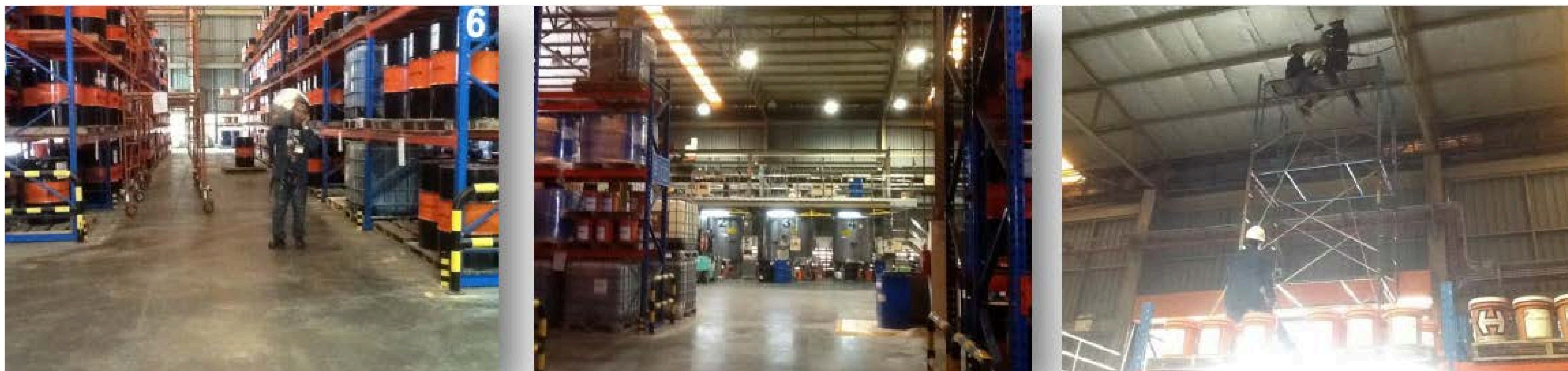
โครงการสร้างสำนักงาน 2 ชั้น

Mega-J Co.,LTD



โครงการติดตั้งระบบไฟฟ้า

บริษัท ไทย ฮาว์ตัน 993 จำกัด



โครงการติดตั้งระบบไฟฟ้า

Mega-J Co.,LTD



โครงการก่อสร้างอาคารชั้นสอง

Thai Union Graphic Co.,LTD TUG



โครงการก่อสร้างอาคารชั้นหนึ่ง

Grand Siam Composites Co.,LTD



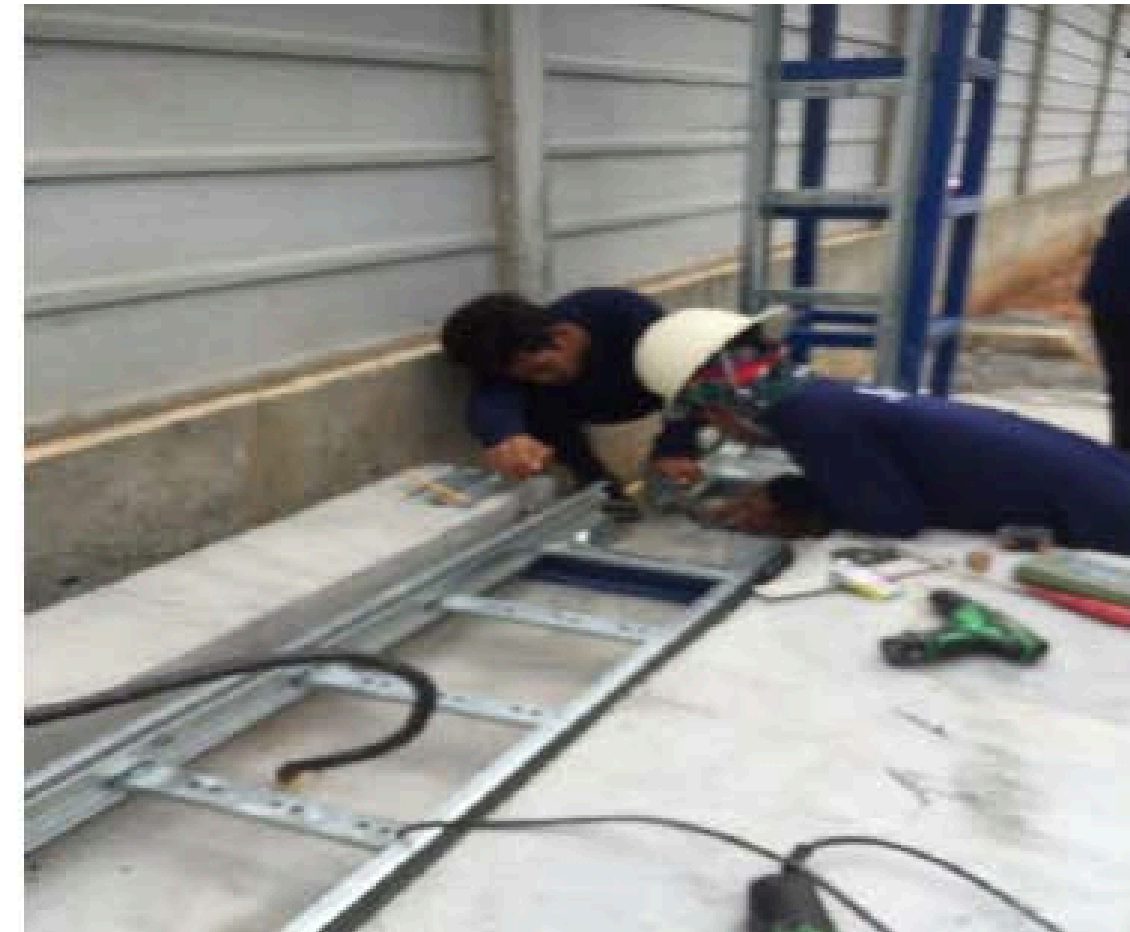
โครงการ ปรับปรุงโครงสร้างหลัง+พื้นโรงงานผลิตกระดาษ

Thai Union Graphic Co.,LTD TUG



โครงการคลังสินค้าให้เช่า

บริษัท ไวร์ เอ็นจิเนีย อินดัสเทรียล จำกัด



.....

VENDER LIST



Kumwell



GROWATT



OUR CUSTOMERS



CENTRALPATTANA



Lotus's



GET IN TOUCH

Contact us

062-2942516

contact@genivegreen.com

Address

25 Thetsaban Rangrak Tai
Chatuchak, Bangkok 10900

Visit Our Website

www.genivegreen.com

